

# BPS Series

## Slim photoelectric sensor for long sensing distance

### ■ Features

- Easy to mount by Flat type
- Realization of 3m sensing distance as small size
- IP67 rated waterproof structure (IEC standard)



**⚠ Please read "Caution for your safety" in operation manual before using.**

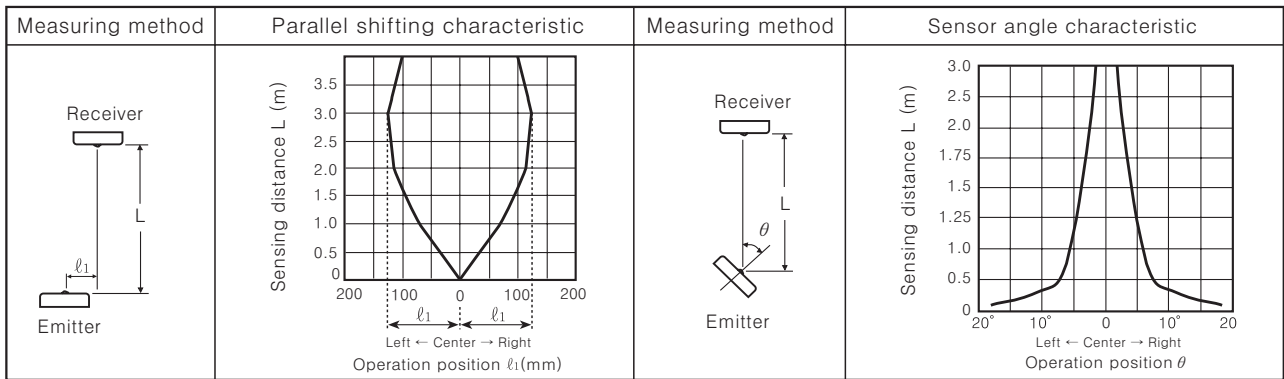


### ■ Specifications

| Model                 | BPS3M-TDT  | BPS3M-TDTL | BPS3M-TDT-P   | BPS3M-TDTL-P |
|-----------------------|--|------------|---|--------------|
| Sensing type          | Transmitted beam   |            |   |              |
| Sensing target        | Opaque materials of Min. $\phi$ 5mm  |            |   |              |
| Operation mode        | Dark ON  | Light ON   | Dark ON   | Light ON     |
| Sensing distance      | 3m   |            |   |              |
| Response time         | Max. 1ms   |            |   |              |
| Power supply          | 12-24VDC $\pm$ 10% (Ripple P-P : Max. 10%)   |            |   |              |
| Current consumption   | Max. 20mA  |            |   |              |
| Light source          | Infrared LED (modulated)   |            |   |              |
| Control output        | NPN open collector output<br><small>☞</small> Load voltage : Max. 30VDC,<br>Load current : Max. 100mA,<br>Residual voltage : Max. 1V |            | PNP open collector output<br><small>☞</small> Output voltage : (Min. Power supply - 2.5V),<br>Load current : Max. 100mA |              |
| Protection circuit    | Reverse polarity protection, Short-circuit protection  |            |   |              |
| Indicator             | Emitter : Power indicator (Red LED), Receiver : Operation indicator (Red LED)  |            |   |              |
| Connection            | Outgoing cable   |            |   |              |
| Insulation resistance | Min. 20M $\Omega$ (at 500VDC mega)   |            |   |              |
| Noise strength        | $\pm$ 240V the square wave noise (pulse width: 1 $\mu$ s) by the noise simulator   |            |   |              |
| Dielectric strength   | 1,000VAC 50/60Hz for 1minute   |            |   |              |
| Vibration             | 1.5mm amplitude at frequency of 10 ~ 55Hz in each of X, Y, Z directions for 2 hours  |            |   |              |
| Shock                 | 500m/s <sup>2</sup> (50G) in X, Y, Z directions for 3 times  |            |   |              |
| Ambient illumination  | Sunlight : Max. 11,000lx, Incandescent lamp : Max. 3,000lx   |            |   |              |
| Ambient temperature   | -25 ~ +65 $^{\circ}$ C (at non-freezing status), Storage : -25 ~ +70 $^{\circ}$ C  |            |   |              |
| Ambient humidity      | 35 ~ 85%RH, Storage : 35 ~ 90%RH   |            |   |              |
| Protection            | IP67 (IEC standard)  |            |   |              |
| Material              | Case : PC  |            |   |              |
| Cable                 | • Emitter : $\phi$ 3mm, 2P   |            | • Receiver : $\phi$ 3mm, 3P • Length : 2m   |              |
| Approval              | <b>CE</b>  |            |   |              |
| Unit weight           | Approx. 66g  |            |   |              |

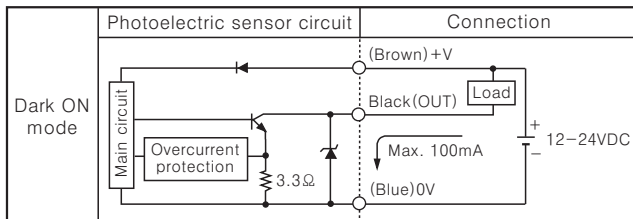
# Slim and Amplifier Built-in Type

## Feature data

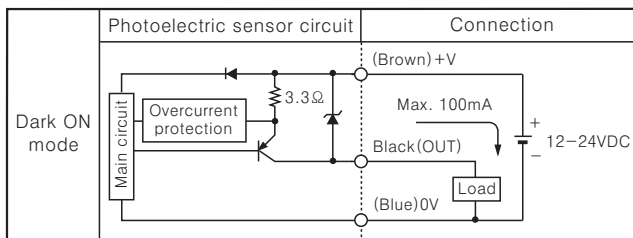


## Control output diagram

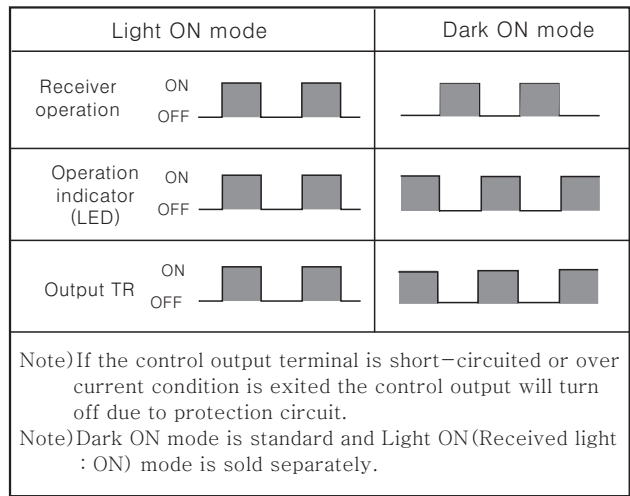
- NPN open collector output



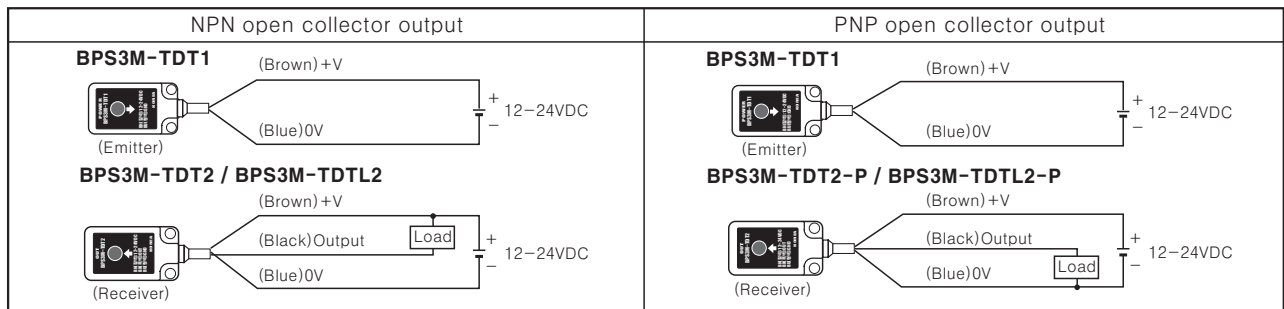
- PNP open collector output



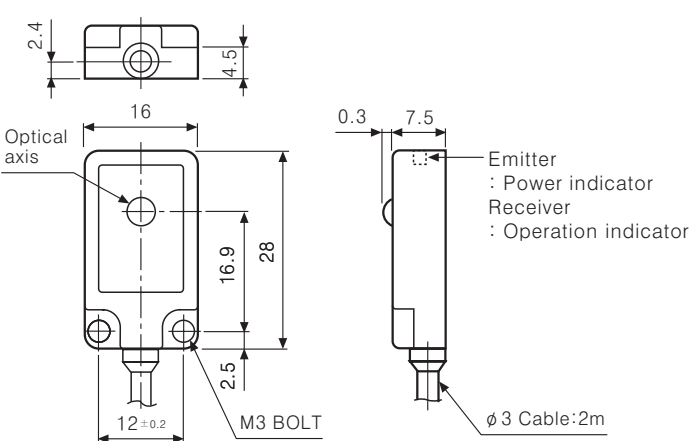
## Operation mode



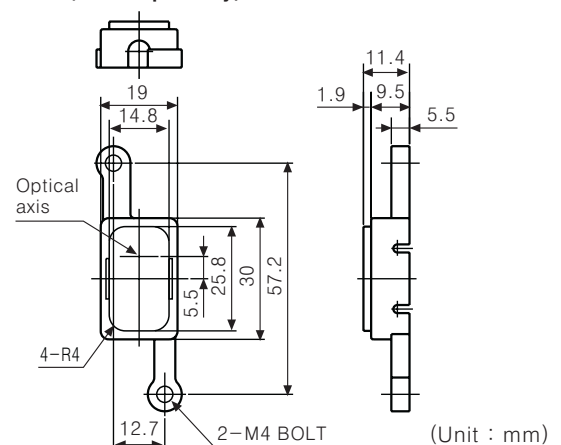
## Connections



## Dimensions



## •Cover(Sold separately)



- (A) Counter
- (B) Timer
- (C) Temp. controller
- (D) Power controller
- (E) Panel meter
- (F) Tacho/Speed/Pulse meter
- (G) Display unit
- (H) Sensor controller
- (I) Switching power supply
- (J) Proximity sensor
- (K) Photo electric sensor
- (L) Pressure sensor
- (M) Rotary encoder
- (N) Stepping motor & Driver & Controller
- (O) Graphic panel
- (P) Production stoppage models & replacement